

# SongLine Yachts of Indonesia

Jalan Damai RT.9 RW.2 No.30/O Ciganjur Jakarta Selatan 12630 INDONESIA

Phone : +1(813)9462020

Email : [songlineyachts@gmail.com](mailto:songlineyachts@gmail.com)

Website : [www.songlineyachts.com](http://www.songlineyachts.com)

## 2013 Custom Pacific Expedition 65



### HIGHLIGHT

- Yacht Details : Custom Pacific Expedition
- Built : 2013
- Location : PompanoBeach, Florida
- Last Refit : 2022
- Boat Name : Barbara Gail

## **SPECIFICATIONS**

LOA: 65ft  
Beam: 25ft  
Draft: 5ft  
Hull Material: Fiberglass  
Fuel Capacity: 1800 gallons

## **MECHANICAL**

### Engines:

Twin Cummins QSC 600HP  
Engine Hours: 420  
Transmission: ZF  
Drive: Zeus Pod  
Generators:  
Onan 21.5 kw  
Hours: 750  
Onan 9 kw  
Hours 200

### Watermaker:

Spectra Newport 700

## **ELECTRICAL**

Two 50 amp power cords with Glendinning Cablemasters.  
Dual battery chargers

Sonihull Ultrasonic Anti-Fouling system

## **GALLEY**

U shaped galley layout  
General Electric 4 burner stove with oven  
Bosch dishwasher  
General electric microwave/convection oven  
Granite Countertops  
Garbage Disposal  
Kitchen Aid trash compactor  
Sub zero refrigerator/freezer

## **ELECTRONICS/NAV EQUIPMENT**

### Lower helm:

Garmin 7616xsv display  
Dockmate Controller  
Vesper Marine WatchMate AIS VHF  
Mercury marine Smartcraft Precision Pilot with Skyhook technology  
2 Ipad displays  
13 high resolution cameras throughout the vessel, interior, exterior, engine and pump rooms.  
Abode home security system.  
KVH Satellite TV  
Zeus joystick control

#### Upper Helm:

2 Garmin 7612 displays  
Garmin XHD72 open array radar  
Standard Horizon Matrix GX 2000 VHF  
Garmin GMI 20  
Zeus joystick controls  
ACR RCL-75 spotlight  
GUEST STATEROOMS  
2 Guest staterooms with full Ensuite heads.  
TV with Apple Home pods.

#### Storage.

Port guest stateroom with split twin extra long mattresses.  
Stbd guest stateroom with full king mattress.

All new interior refit 2022.

#### **CREW QUARTERS**

Upper level crew quarters for ease of access to both helms.  
Short Queen Mattress

Adjacent Crew head located next to stateroom.

#### **LOWER AFT DECK**

Spacious aft deck with teak sole. Curved seating with dual granite counter top tables.  
Cockpit grill that comes with boat.  
New upholstery and granite tables new in 2022.  
FLYBRIDGE  
Fully equipped helm with full enclosure and dual helm chairs.  
Flybridge air conditioning with seating and sink.

#### **UPPER AFT DECK**

Massive upper aft deck with stainless handrails capable of abundant seating and entertaining.  
Cradle for tender accompanied with Marquipt Davit.

#### **MASTER STATEROOM AND HEAD**

Massive master stateroom with kingsize bed and full Ensuite head and shower to port.  
Equipped with Satelite TV,  
Apple Homepod  
Air conditioning control  
Ample storage  
All new interior refit 2022

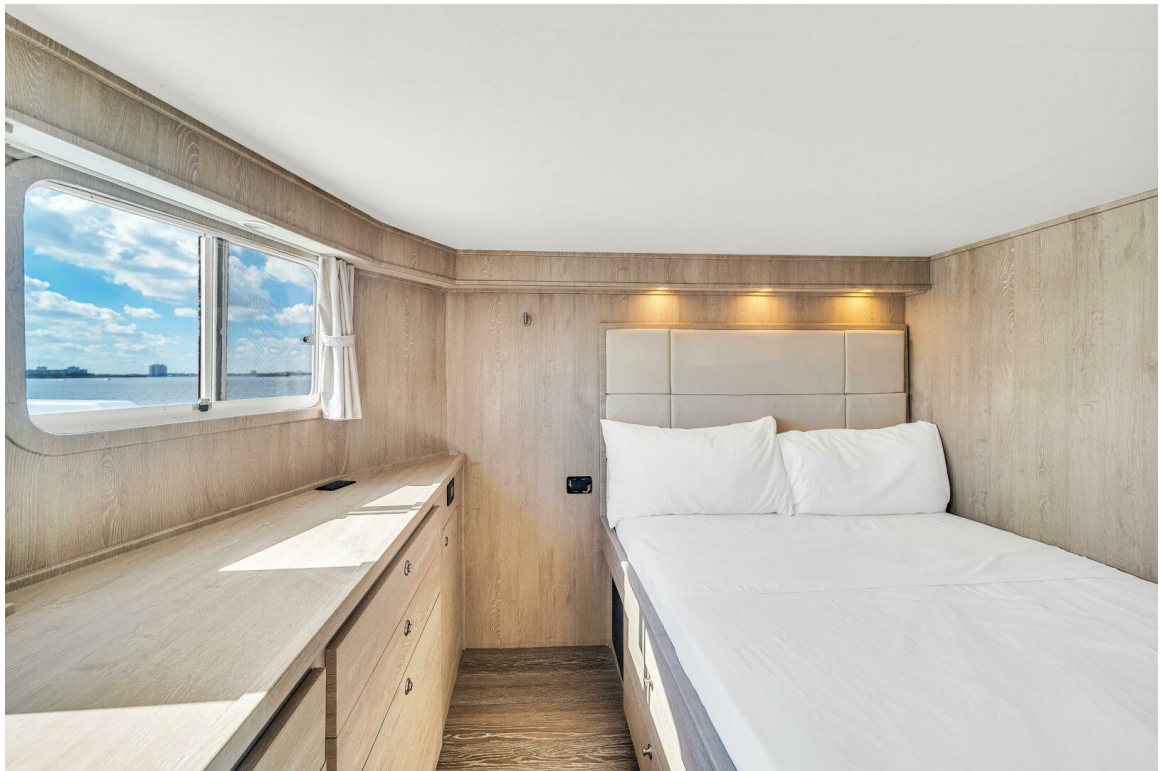
#### **SALON WITH GALLEY UP**

Open concept design between the salon and galley to enhance social interaction. Designed with expansive windows and panoramic views.  
Adjustable granite countertop for entertaining.  
Built in settee for optimal comfort.  
Storage throughout.  
Satelite TV and entertainment system.







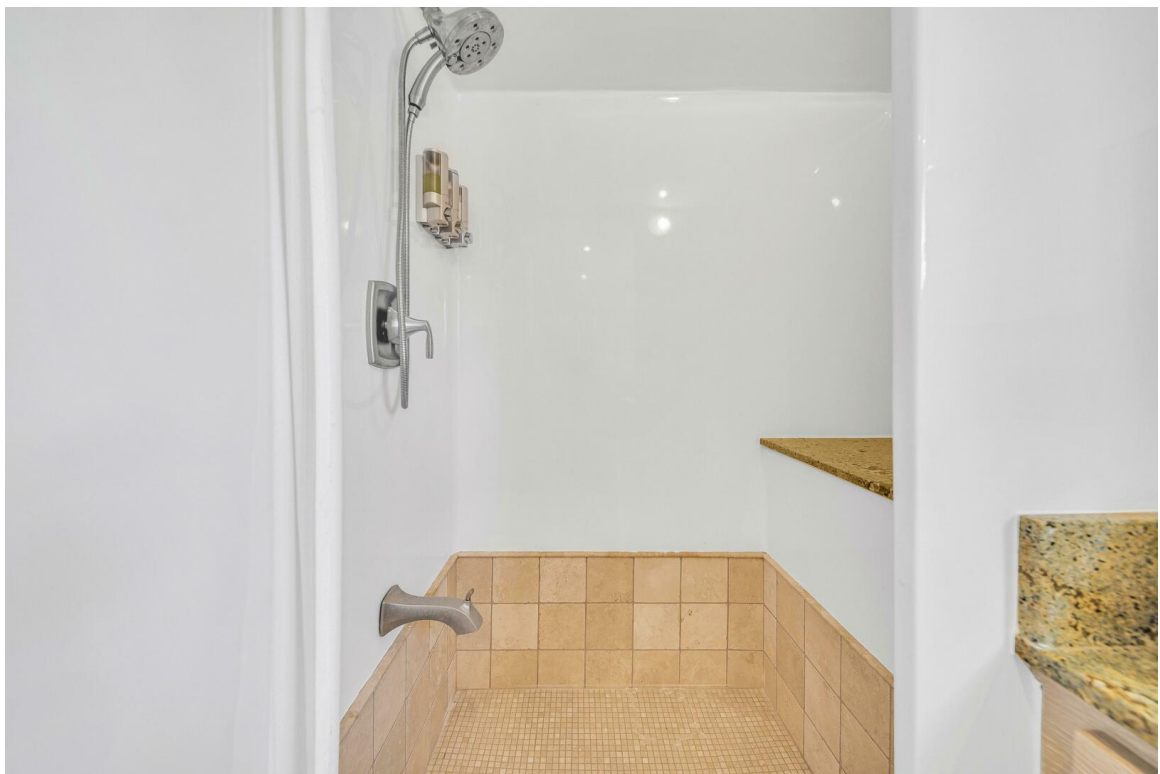
















#### **KEY FEATURES:**

**Spacious Living:** The Barbara Gail boasts a 3-stateroom, 3-head layout, along with crew quarters equipped with an additional head. This thoughtful design ensures ample space and privacy for family, friends, and crew members. The open layout and abundant storage options create an inviting environment, giving the feel of a much larger vessel.

**Large Fully Equipped Galley:** The galley is a chef's dream, featuring top-of-the-line appliances including a full-size Sub-Zero refrigerator and freezer, dishwasher, full-size induction stove/oven, and a convection oven/microwave. Whether preparing a simple meal or a gourmet feast, this galley is fully equipped to meet all culinary needs.

**Recent Upgrades:** In 2022, the Barbara Gail underwent an extensive interior refit by Jarrett Bay Boatworks, enhancing both aesthetics and functionality. In addition, the exterior was completely repainted, ensuring the yacht looks as stunning as it performs.

**Travel Ready:** With a 1,500+ mile cruising range, this catamaran is equipped with dual standup pump and engine rooms for easy maintenance. Additional amenities include a full-size freezer, washer, and dryer, a 700 gpd Watermaker, and two large water tanks, ensuring ample provisions for extended expeditions.

**Expansive Deck Space:** The Barbara Gail features a massive flybridge and upper aft deck, complete with to accommodate your preferred tender and jet ski. This expansive deck space is perfect for sunbathing, entertaining, or simply enjoying panoramic ocean views.



**Power and Performance:** Powered by low-hour twin Cummins 600 HP engines coupled with Zeus pods, this vessel delivers an excellent balance of performance and efficiency. Twin Onan generators ensure that all yacht systems have ample power, making every journey smooth and comfortable.

**Advanced Navigation and Amenities:** The dual helm layout is outfitted with state-of-the-art Garmin electronics, DockMate, Vesper AIS, Starlink for high-speed internet, onboard Wi-Fi, and a comprehensive security system with cameras throughout the vessel. These features ensure safe and efficient navigation, connectivity, and peace of mind during your travels.

The Barbara Gail is a luxurious, functional, and well-equipped expedition catamaran, ready to take you on your next adventure. Whether you're exploring the East Coast, cruising the Caribbean, or embarking on a charter operation, this vessel offers unparalleled comfort and capability.

**SALE PRICE : 1,880,000 USD**

**Contact:**

Robin Engel

SongLine Cruises of Indonesia

<http://www.songlineyachts.com>

Phone : +1(813)9462020